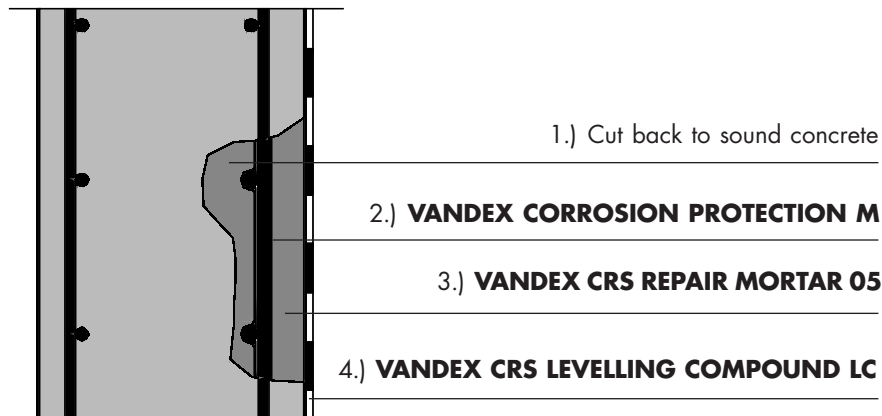
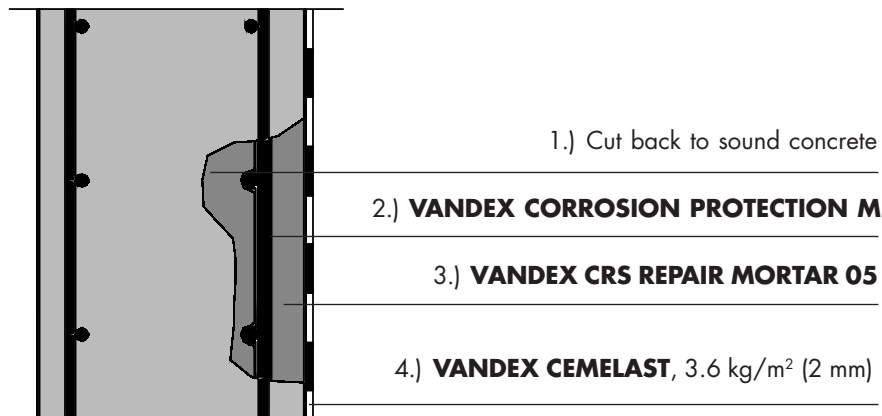


Patch repair work:



With carbonation barrier:



Application Instructions:

Patch repair work

- 1.) Remove all protrusions, cut back to sound concrete, chiselling out any damaged areas.
- 2.) Apply VANDEX CORROSION PROTECTION M in two coats onto the prepared steel.
- 3.) Reprofile the chased out area with VANDEX CRS REPAIR MORTAR 05.
- 4.) Apply VANDEX CRS LEVELLING COMPOUND LC as a surface finish to the concrete repairs and concrete surface.

With carbonation barrier:

- 1.) Remove all protrusions, cut back to sound concrete, chiselling out any damaged areas.
- 2.) Apply VANDEX CORROSION PROTECTION M in two coats onto the prepared steel.
- 3.) Reprofile the chased out area with VANDEX CRS REPAIR MORTAR 05.
- 4.) Apply two coats of VANDEX CEMELAST, at the total rate of 3.6 kg/m² (2 mm), for surface protection.

The information contained herein is based on our longterm experience and the best of our knowledge. We can, however, make no guarantee since for a successful outcome, all circumstances in an individual case must be taken into consideration. Indications of quantities required are only averages which in certain cases might be greater.