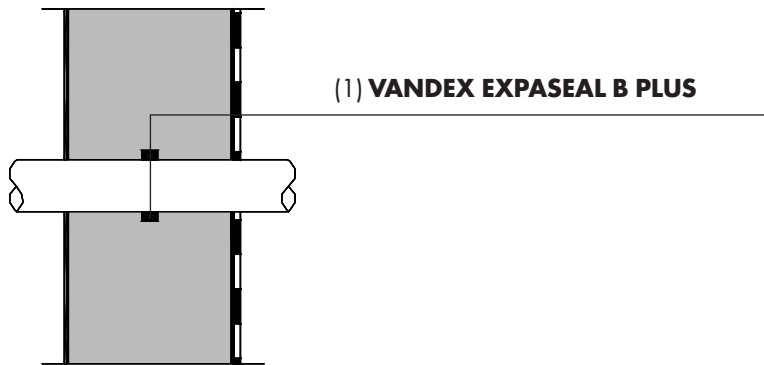
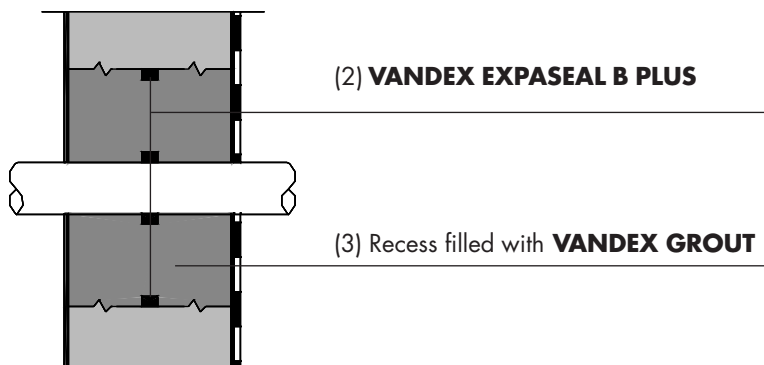


Pipe cast in-situ



Pipe installed in recess after wall is poured



Application Instructions:

- 1.) Fix VANDEX EXPASEAL B PLUS with VANDEX UNIFLEX around the pipe such that it is in the middle of the wall, before closing the formwork.
Ensure that the VANDEX EXPASEAL B PLUS is in firm contact with surface of the pipe.
- 2.) Fix VANDEX EXPASEAL B PLUS with VANDEX UNIFLEX around the pipe such that it is in the middle of the wall. Fix the VANDEX EXPASEAL B PLUS with VANDEX UNIFLEX in the middle of the wall on concrete surfaces in the recess.
- 3.) Fill the recess with VANDEX GROUT 04/08/16 depending on the size. The surface of the pipe must be clean and free of any foreign substances.

The information contained herein is based on our longterm experience and the best of our knowledge. We can, however, make no guarantee since for a successful outcome, all circumstances in an individual case must be taken into consideration. Indications of quantities required are only averages which in certain cases might be greater.